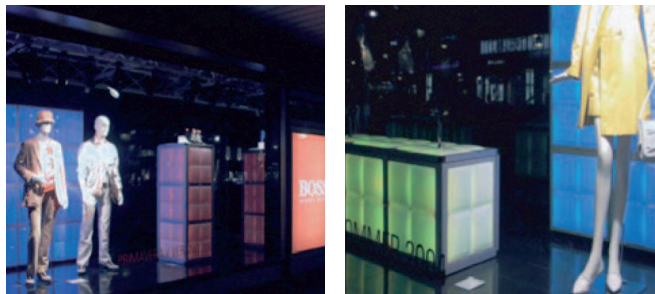




SHOWCASE

Hugo Boss KaDeWe - Berlin, Germany



With over 60,000 sqm floor space and more than 380,000 different articles, the "Kaufhaus des Westens" (KaDeWe) is the largest department store in Europe. Creating an impressive decoration, Traxon lit up the entire display window front with its stylish ML Classic panel. Controlled by DMX technology, the panel allows the KaDeWe endless possibilities for creating extraordinary compositions of various different colorings, pulsating in a huge variety of different sequences, fascinating passers-by at day and night.

PROJECT DETAILS

Category: Retail
Client: Hugo Boss KaDeWe
Location: Berlin, Germany
Date: 2005-02-01
Region: Traxon Germany

Traxon Technologies Europe GmbH

For more information, please visit WWW.TRAXONTECHNOLOGIES.COM

Or contact us: Traxon Europe E: marketing.europe@traxontechnologies.com

HONG KONG SHANGHAI SINGAPORE SYDNEY TOKYO MUMBAI ROTTERDAM COLOGNE ISTANBUL LONDON MADRID MILAN PADERBORN PARIS MOSCOW
WARSAW COPENHAGEN VIENNA NEW YORK ATLANTA CHICAGO LOS ANGELES TORONTO DUBAI BUENOS AIRES MÉXICO D.F. SAO PAULO COLOMBIA