



16PXL Strip RGB 2.0

The Traxon 16PXL Strip RGB 2.0 features 16 individually calibrated, controllable ultra bright SMT LEDs on a 16 x 1 array with a 31.25mm pitch. Example use cases include architecture (highlights on walls, floors, counters, decoration elements) in backlighting for light boxes or stretch ceilings and in light panels and to create impact on trade fairs. The Strip can be used alongside the 16PXL Board RGB 2.0 and the 64PXL Board RGB 2.0. The Strip has a default length of 499mm and can be ordered in intervals of 31.25mm down to 240mm. This product is intended for use in high-quality colored light applications.



Product Specifications

Light Source (LEDs)	16 - 8 SMT RGB LEDs (Individually Controllable)
Colour Range	16.7 Million additive RGB colors
Colour Resolution	3 x 16-bit (Gamma correction)
Beam Angle	115°
Luminous Flux	121 lm uncalibrated; 89 lm calibrated (16 LEDs)
Luminance Pitch	2725 cd/m ² uncalibrated; 2048 cd/m ² calibrated (31,25mm x 31,25mm)
LED Pitch	31.25mm / 1.23"
Efficacy	18 lm/W uncalibrated; 19 lm/W calibrated (16 LEDs)
Lumen Maintenance	L70 @ 25°C - 50'000hrs
Light Intensity	43 cd uncalibrated; 32 cd calibrated (1m distance)
Housing	PCB
Dimensions	(max) 499mm x 15mm x 10mm - (min) 240mm x 15mm x 10mm
L x W x H	(max) 19.65" x 0.59" x 0.39" - (min) 9.45" x 0.59" x 0.39"
Weight	0.04kg
Regulatory listing and safety approval	CE, UL, UKCA
Operating Temperature	5 ... 40 °C / 41 ... 104 °F
Storage Temperature	5 ... 60 °C / 41 ... 140 °F
Environment	Indoor IP20
Humidity	0 ... 90%, non-condensing
Color	Black
Cover	Open

Electrical Specifications

Operating voltage	24V DC
Power Consumption (typical)	3.5W
Power Consumption (maximum)	8W

System Specifications

Power/ Data Interface	TX Connect
Control	DMX / e:pix
Intensity dimming range	0 ... 100%
Power Supply	100W 24V DC
Input Voltage	220 ... 240V AC, 50/60Hz
Addressing Options	Auto-Addressing

OSRAM GmbH, Karl-Schurz-Str. 38, 33100 Paderborn, Germany, www.traxontechnologies.com, www.ecue.com

16PXL Strip RGB 2.0

Photometrics

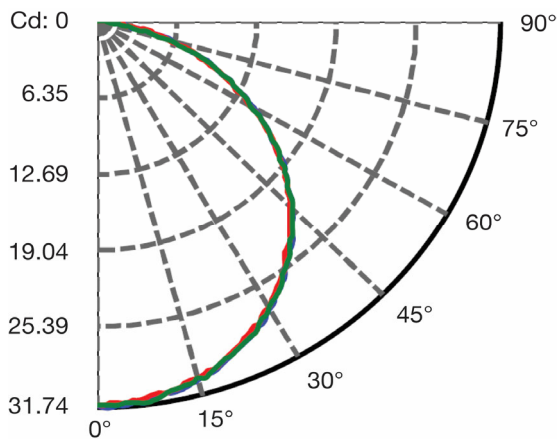
Light Output

Color	Luminous Flux (lm)	Power (W)	Efficacy (lm/W)
White	121.3	6.6	18.4
Red	25.15	1.64	15.3
Green	56.94	2.86	19.9
Blue	7.63	1.22	6.3

Illuminance

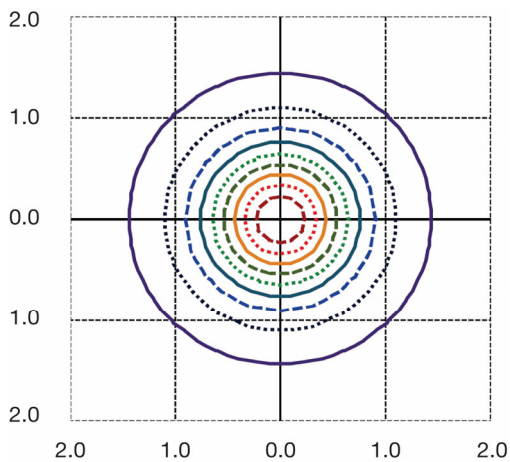
Distance	10cm	25cm	50cm	72cm	100cm
Lux	4258	681	170	82	43
50% lmax (diameter)	31cm	78cm	157cm	235cm	308cm

Candela Distribution



Measured on: White
Beam angle (50% lmax): 114°

Illuminance at a Distance



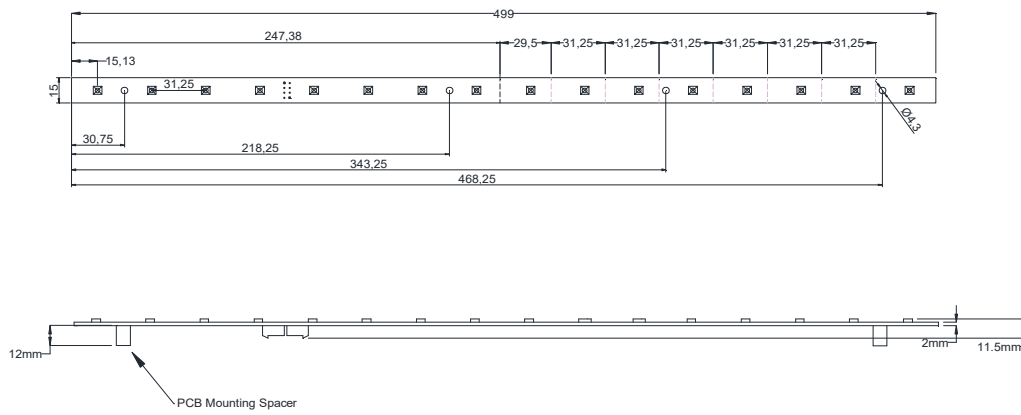
ISO - Illuminance
Unit: [lx]

Distance: 5.09 m

- 0.39 (100% Emax)
- 0.35 (90% Emax)
- 0.31 (80% Emax)
- 0.27 (70% Emax)
- 0.23 (60% Emax)
- 0.19 (50% Emax)
- 0.16 (40% Emax)
- 0.12 (30% Emax)
- 0.08 (20% Emax)
- 0.04 (10% Emax)

Coordinate scale: d/h

IES and LDT files are available for download from the Traxon website.

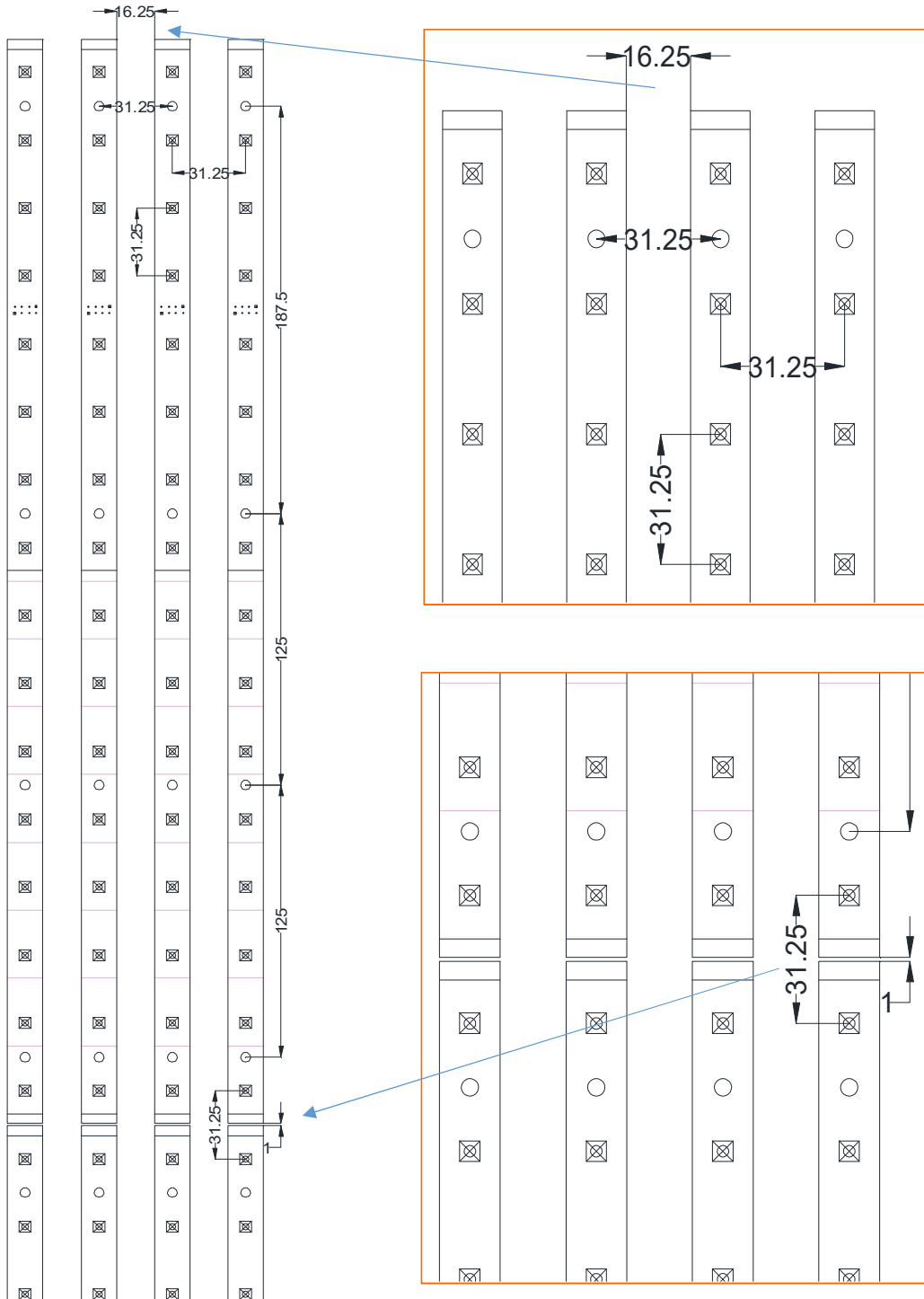


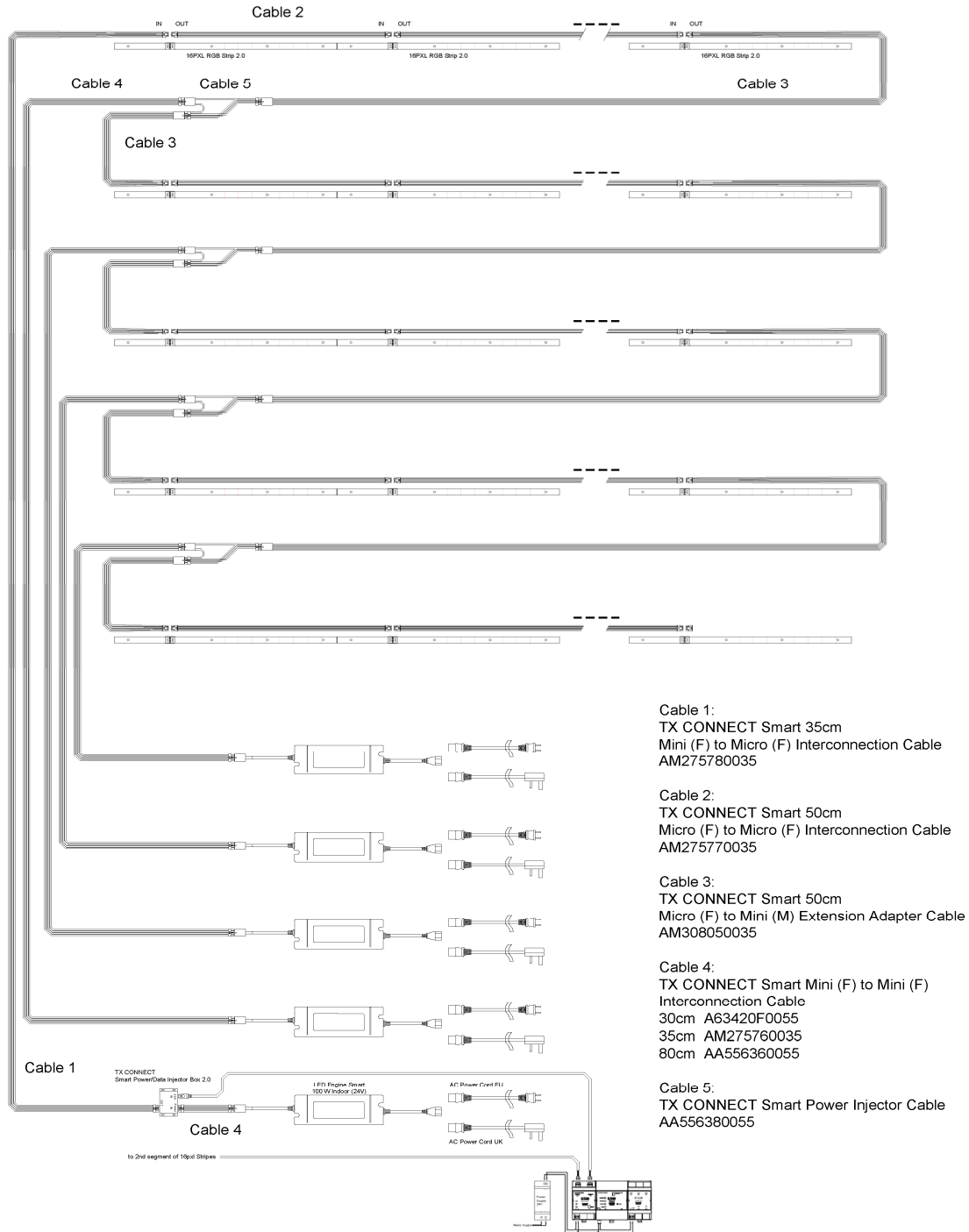
16PXL Strip RGB 2.0

Mounting (dimensions in mm)

No conductive material with 1mm around LED boards.

Mounting Multiple Strips





8 x 16PXL Strip RGB 2.0 can be powered by one LED Engine Smart 100W indoor.
 40 x 16PXL Strip RGB 2.0 can be daisy chained per controller output (e:pix universe).
 Cabling lengths: 100 metres Controller to first fixture. 30 metres Power supply to last fixture in chain.



16PXL Strip RGB 2.0

Ordering

Fixtures

Item Code	Description
AM250290035	16PXL Strip RGB 2.0
AM250270035	64PXL Board RGB 2.0
AM250280035	16PXL Board RGB 2.0

Mouting Accessories

Item Code	Description
AM275730035	Board Mounting Kit (100 x spacer, 100 x screws)
AM275740035	Board holder, punch version (1.5-2mm sheet metal, 5.5mm hole), 12mm (100x)
AM275750035	Board holder, drill version (wood; requires hole D=8mm, >9mm deep), 12mm (100x)

TX CONNECT

Item Code	Description
AM308040035	TX CONNECT Smart Power/Data Injector Box 2.0
AA556380055	TX CONNECT Smart Power Injector Cable
A63420F0055	TX CONNECT Smart 30cm Mini (F) to Mini (F) Interconnection Cable (11.8")
AM275760035	TX CONNECT Smart 35cm Mini (F) to Mini (F) Interconnection Cable (13.8")
AA556350055	TX CONNECT Smart 50cm Mini (F) to Mini (M) Extension Cable (19.7")
AA556360055	TX CONNECT Smart 80cm Mini (F) to Mini (F) Interconnection Cable (31.5")
A6342330055	TX CONNECT Smart 1m Mini (F to M) Extension Cable (3.3ft)
A6342410055	TX CONNECT Smart 3m Mini (F to M) Extension Cable (9.8ft)
AA580410055	TX CONNECT Smart 5m Mini (F to M) Extension Cable (16.4ft)
A6342680055	TX CONNECT Smart 10m Mini (F to M) Extension Cable (32.8ft)
AA556130055	TX CONNECT Indoor Data Cable, 1m (3.28ft)
A63408C0055	TX CONNECT Indoor Data Cable, 3m (9.84ft)
A6341040055	TX CONNECT Indoor Data Cable, 10m (32.8ft)
AA556150055	TX CONNECT Indoor Data Cable, 20m (65.6ft)

TX CONNECT - for Strip only

Item Code	Description
AM275770035	TX CONNECT Smart 50cm Micro (F) to Micro (F) Interconnection Cable (19.7")
AM275780035	TX CONNECT Smart 35cm Mini (F) to Micro (F) Interconnection Adapter Cable (13.8")
AM308050035	TX CONNECT Smart 50cm Micro (F) to Mini (M) Extension Adapter Cable (19.7")

Power Supply

Item Code	Description
AA624090055	LED Engine Smart 100W Indoor (24V)
AA553860055	AC Power Cord, 2m (6,6ft) (EU)
AA556290055	AC Power Cord, 2m (6,6ft) (US)
AA556300155	AC Power Cord, 2m (6,6ft) (UK)
AM3137600HA	Power Supply 15W 12V DIN rail (e.g for SYMPL input Node)
AM313830035	Power Supply 30W 48V DIN rail (e.g. for SYMPL Switch with PoE)

Controls

Item Code	Description
AB443930035	SYMPL e:pix Node
AB447060035	SYMPL Core S, up to 5,000 PXL
AM193980031	LIGHTING CONTROL ENGINE 2 mx, up to 50,000 PXL
AA629450035	LIGHTING CONTROL ENGINE 2, up to 2,000,000 PXL
AA629460035	LIGHTING CONTROL ENGINE 2 fx, up to 2,000,000 PXL
AA438940235	Video Micro Converter (DMX/e:pix)
AM313830035	SYMPL Switch with 5x 10/100 with PoE
AA632020055	8-Port Network switch with 4x 10/100/1000 ports with POE
AA611750055	24-Port Network switch with 24x 10/100/1000 ports and 2x combo SFP
AA611760055	48-Port Network switch with 48 x 10/100/1000 ports and 2x Combo SFP

